

# **L U M E X I N S T R U M E N T S**

**Software**

**RAPID**

**GUIDELINES ON SOFTWARE INSTALLATION  
AND ANALYZER CONNECTION**

**B0100-00-00-00-00 IN**

**2023**

**Please read attentively these Guidelines before installing or starting the software. Lumex Instruments shall not be liable for any damages suffered because of non-compliance with these guidelines.**

**Read and accept the license agreement before starting work with the software.**

No part of these Guidelines may be reproduced or transmitted in any form or by any means neither electronically nor mechanically without the prior written permission of Lumex Instruments.

Contact us at [sales@lumexinstruments.com](mailto:sales@lumexinstruments.com)

Welcome to our Website [www.lumexinstruments.com](http://www.lumexinstruments.com)

Version 4.0

Date: 01.06.2023

---

## RAPID installation and instrument connection user's manual

If the RAPID software is not installed on the computer, follow the initial installation instructions. If the RAPID software is already installed on the computer, to update it follow the instructions for updating the installed version.

For the initial installation of the RAPID software, do the following:

- 1 Turn on the personal computer.
- 2 Start `setup.exe` file for software installation from the storage device, which is a mandatory part of the delivery.
- 3 In the opened **Installshield Wizard** window, click the **Next** button.
- 4 In the **License Agreement** window read the text of the license agreement and accept the terms by selecting item **I accept the terms of the license agreement**, then click the **Next** button.
- 5 In the **User Information** window type the user's name and the company name, then click the **Next** button.
- 6 In the opened dialog box, indicate the folder to which the RAPID files will be installed. The path `C:\Lumex\Rapid` is offered by default. To change the path, click the **Change** button, select the required folder and click the **Next** button.
- 7 In the next **Select setup** window, select the type of installation. The following options are offered:
  - **Basic** to install all components of the program, operation manual and software user's manual.
  - **Custom** to select a set of components to be installed – it is possible to install the software with or without documentation.

It is recommended to choose the **Basic** type. After selection, click the **Next** button.

- 8 In the **Add new group** window type the group name and information about the group manager: login (displayed in the **Authorization** window) and operator's name (displayed in the **Operator** column of all types of lists), password, select the user's interface language. To provide possibility for the user to change his password at the first entry into the program, select the **Change password at the first entry** checkbox in the **Add new group** window.



**The group manager is a user which in the RAPID software creates new users within his group and manages their accounts as well as manages the security system in compliance with the policy of the company.**



**The user which doesn't have the group manager rights performs the same functions in the RAPID software as the group manager does, excepting functions of new users adding and security system settings management.**

Click the **Next** button.

- 9 In the **Select next action** window select an option:
  - the **Continue the installation** to continue the installation process;
  - the **Add group** to create a new group and enter the information about the group manager (login, operator's name, interface language and password);
  - the **Add user** to create a new user in any existing group and enter the information about the user (login, operator's name, interface language and password).

After selection, click the **Next** button.

- 10 In the opened window click the **Install** button.
- 11 The **Check setup information** window will open. Make sure that the correct information is entered and click the **Next** button.

12 After the RAPID installation program has performed all operations, a window «Device Driver Installation Wizard». To continue, click next.

⇒ **When installing the software on the computer with Windows 2000/XP operational system, drivers will be installed automatically. After closing this window, the software will be completely installed and ready to operate.**

⇒ **When installing the software on the computer with Windows 7 or higher operational system, proceed as specified below.**

13 In the **License agreement** window, check the «I accept the terms in the license agreement» item and click the **Next** button.

14 In the next window, click the **Finish** button after the installation of the drivers has been completed. After closing this window, the software will be completely installed.

15 Remove the disc from the CD-ROM drive.

To update the installed version of the RAPID software, do the following:

- 1 Turn on the personal computer.
- 2 Start `setup.exe` file for software installation from the storage device, which is a mandatory part of the delivery.
- 3 In the opened **Installshield Wizard** software window select an option:
  - **Install** for the initial installation of the software.
  - **Repair** to update the RAPID software, if the software version 1.00.432 and higher was installed on the computer. Upon the update, all archive data and previously created users remain.
  - **Remove** to remove the software from the computer with saving all archives data (in the `repos` folder). To update the RAPID software version lower than 1.00.432, first

remove the installed software by selecting the **Remove** option. Then install the software following the instructions for the initial installation.



**Please note that after removing the RAPID software the data archives remain in the “repos” folder stored in the directory chosen at the previous installation.**



**The path to the “repos” folder, if the software versions lower than 1.00.432 were installed by default, is C:\ Program Files\ Lumex\ Rapid\ repos. The path to the “repos” folder, if the software versions 1.00.432 and higher were installed by default, is C:\ Lumex\ Rapid\ repos). To operate with data saved in the previous software version, copy the “repos” folder to the newly installed “Rapid” folder.**

- 4 Click the **Finish** button.

**To start the software operation, do the following:**

- 1 Connect one end of the interface cable from the analyzer delivery set to the connector on the analyzer panel, and connect the other end to the computer connector. The RA-915+ analyzer can be connected to RS-232 connector as well as to USB connector of computer. To connect analyzer to USB connector of computer use cable adapter for connection of devices with RS-232 interface to USB connector of computer, preliminary installing drivers for it on the computer. Recommended model of cable adapter is Gembird UAS111 with Prolific 2303 chip type.
- 2 Activate the analyzer according to the *Operation Manual*.
- 3 Turn on the computer by using a power on/off switch. The operating system will load, and the Windows desktop screen will appear.
- 4 Start the RAPID software. To do this, double left-click the software icon (Fig. 1) on the Windows desktop screen or select the submenu **Programs – Lumex – Rapid – Run Rapid**.



Fig. 1 RAPID software icon

5 The software splash screen will appear. (Fig. 2).



Fig. 2 RAPID splash screen

The splash screen will automatically disappear in 5 seconds. If you want to remove it faster, place the cursor anywhere on the splash screen and click the left mouse button.

After the splash screen disappears, the **Authorization** window opens (Fig. 3Fig. ). Choose the user's name from the **Name (Login)** drop down list, enter the password in the **Password** text field and press the **Entry** button. The **Exit** button is designed for exiting from the software.

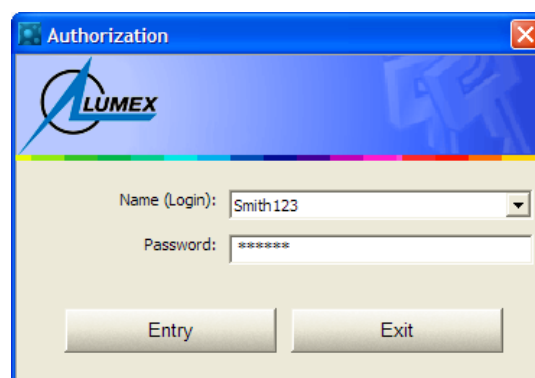


Fig. 3 Authorization dialog

Upon start-up, the software automatically establishes connection with the analyzer.

After the authorization window disappears, the **Main** window will open (Fig. 4).



Fig. 4 Main window

By clicking the **Instrument information** button the **Instrument information** dialog window will open (Fig. 5).

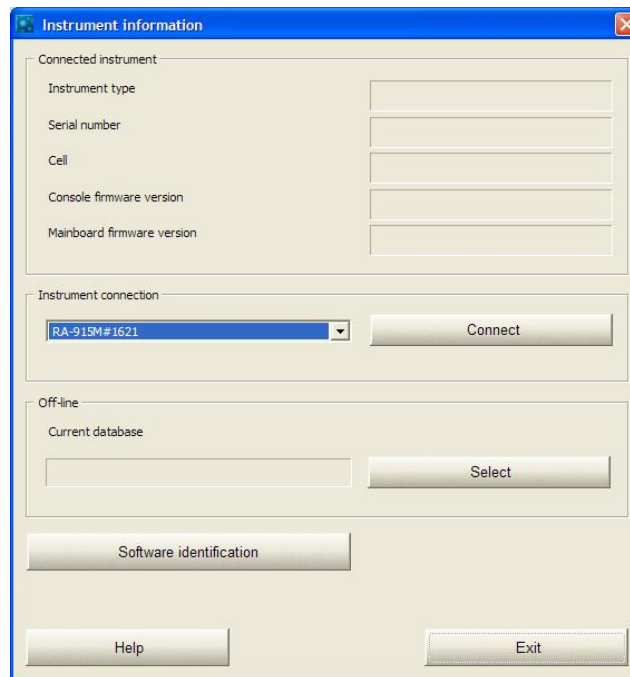


Fig. 5 Instrument information dialog

To connect the instrument to the software for the first time, click the **Connect** button. At the first connection of the RA-915+ analyzer the window for digital key input will open. Input the key specified in the Key.txt file on the electronic device, or which was sent by e-mail.



Upon further start-ups of the software the connection will be set automatically, provided the instrument is switched on and connected to the computer via the cable.

If at the first connection there is no name of the instrument connected to the computer in the **Instrument connection** drop down list of the **Instrument information** window (Fig. 6), do the following:

- 1 Check the correct connection of the instrument to the computer via the cable from the delivery set.
- 2 If the instrument is connected to the USB connector of the computer, install the USB driver manually. To do so, open the DriversUSB folder, located in the directory where the software was installed (C:\Lumex\Rapid\DriversUSB by default). If your computer is operated by Windows 2000 or Windows XP, run the CDM20600 file by double clicking it/ Otherwise, run CDM21224\_Setup.exe file.

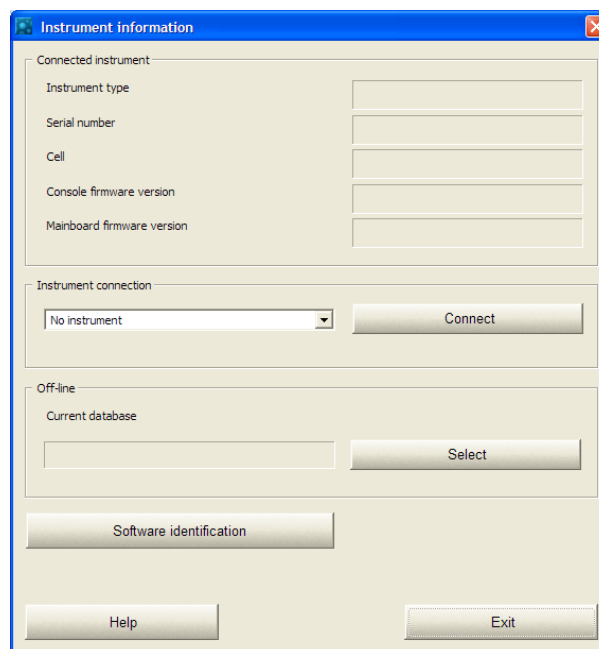


Fig. 6 Instrument information dialog for operation without the instrument

The analyzer operation must be performed according to the *Operation manual*, detailed description of the software operation is given in the *Rapid software user's manual*.

The documentation is installed during the Basic installation of the software, and, if it was marked with a check mark, during a Custom installation in the Doc folder of the program directory, where the software was installed (by default, C/Lumex/Rapid/Doc).